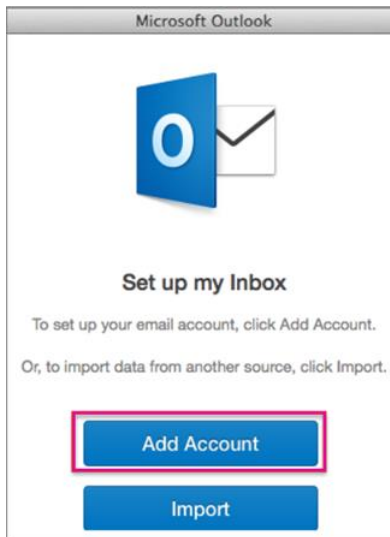
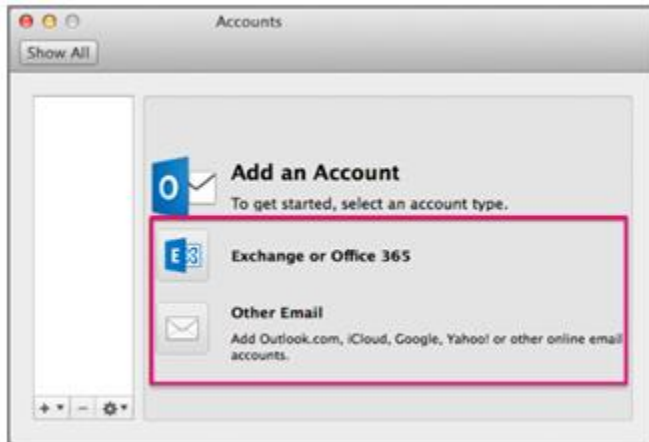


Configuring Outlook 2016 for Mac with AutoDiscovery method

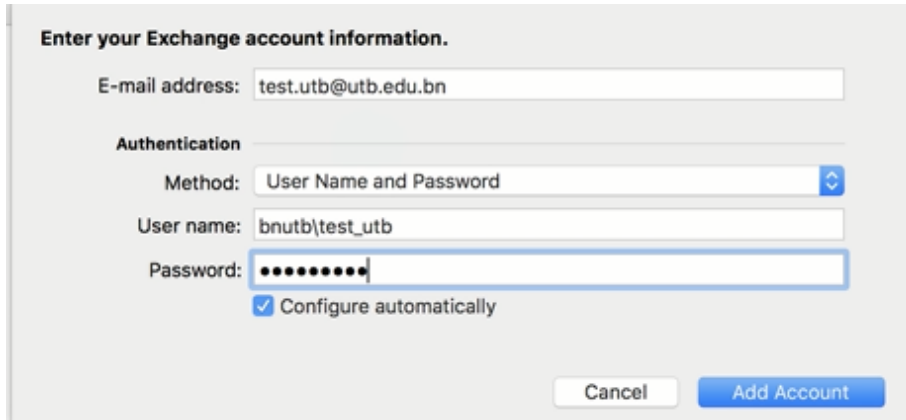
- 1) Open Outlook for Mac. On the setup page, click **'Add Account'**.



- 2) Select 'Exchange or Office 365'



3) Enter user information, tick 'Configure automatically' and click 'Add Account'.



Enter your Exchange account information.

E-mail address:

Authentication

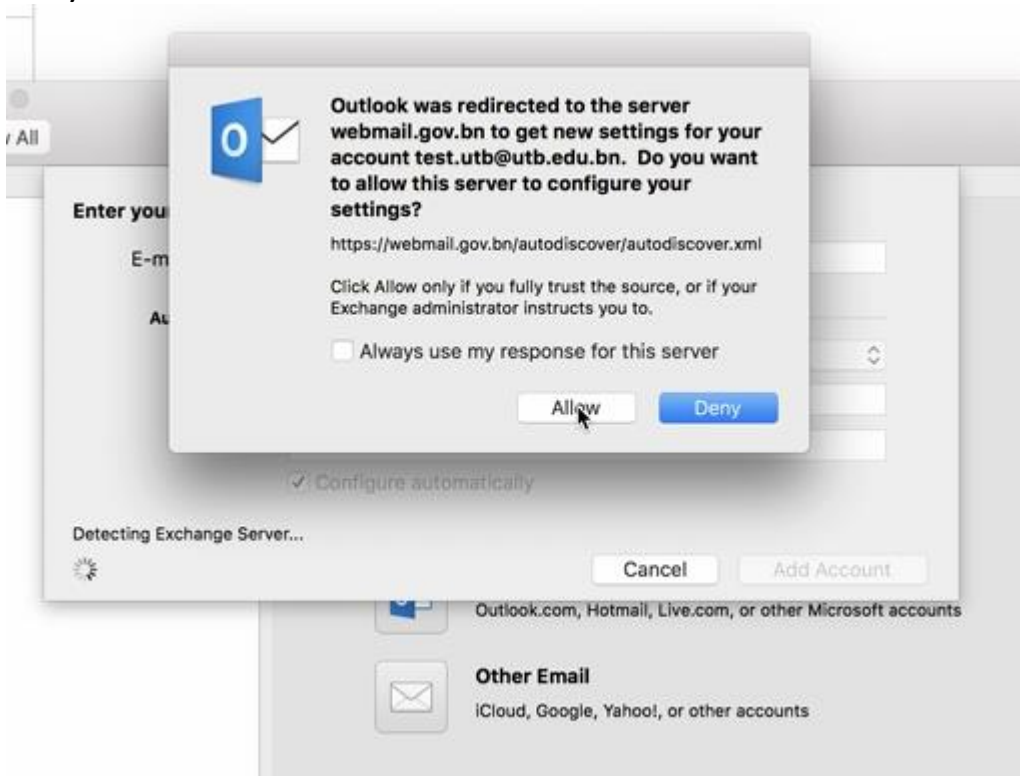
Method:

User name:

Password:

Configure automatically

4) Click 'Allow'.



Outlook was redirected to the server webmail.gov.bn to get new settings for your account test.utb@utb.edu.bn. Do you want to allow this server to configure your settings?

<https://webmail.gov.bn/autodiscover/autodiscover.xml>

Click Allow only if you fully trust the source, or if your Exchange administrator instructs you to.

Always use my response for this server

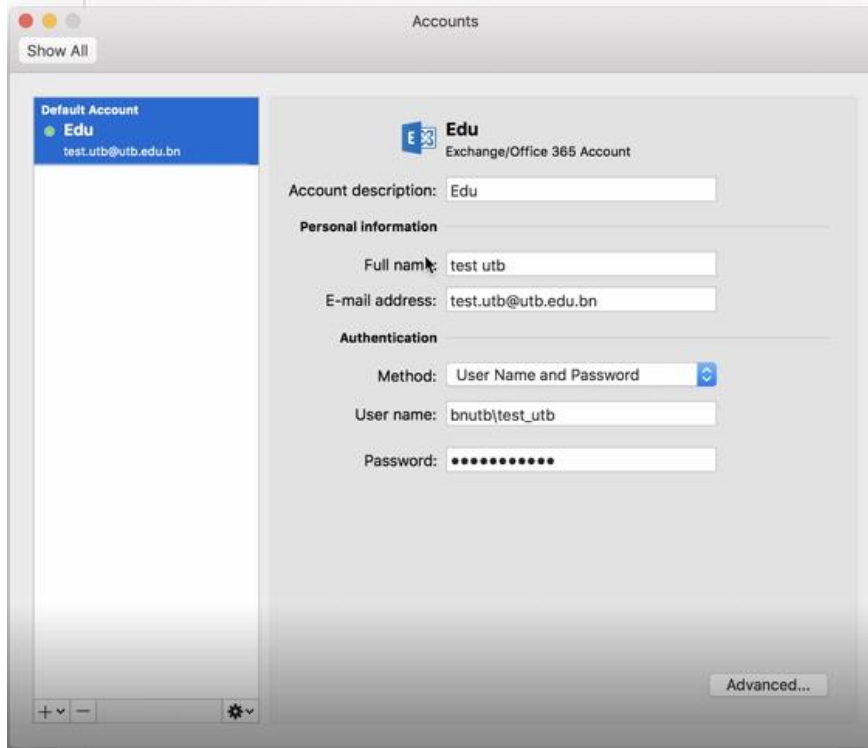
Configure automatically

Detecting Exchange Server...

Outlook.com, Hotmail, Live.com, or other Microsoft accounts

Other Email
iCloud, Google, Yahoo!, or other accounts

5) The account added will show in the left pane.



6) Email contents will sync in Outlook

