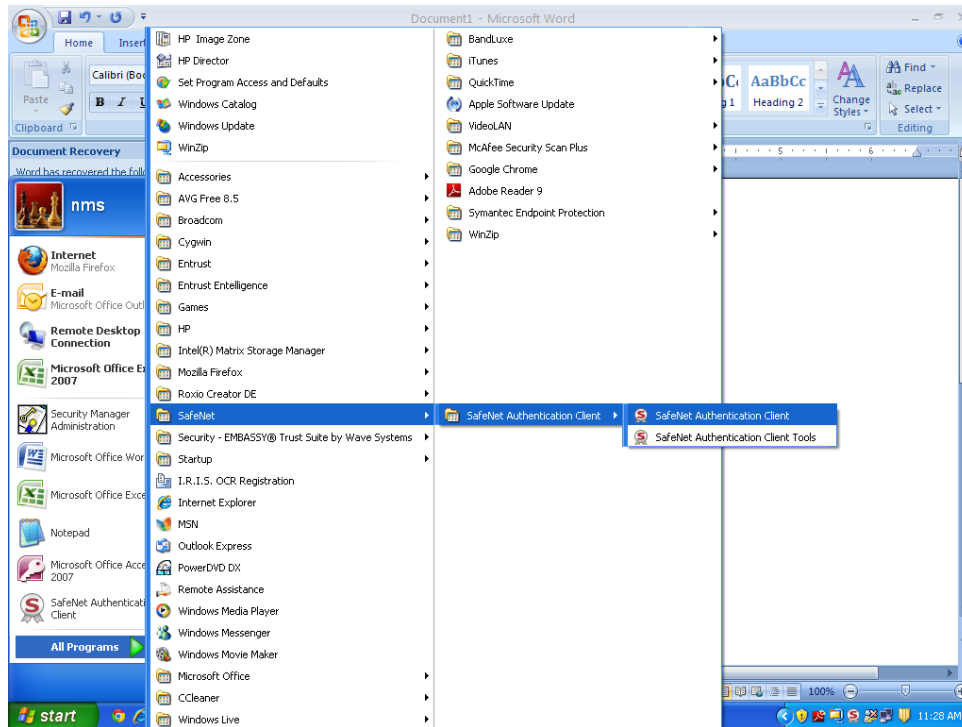
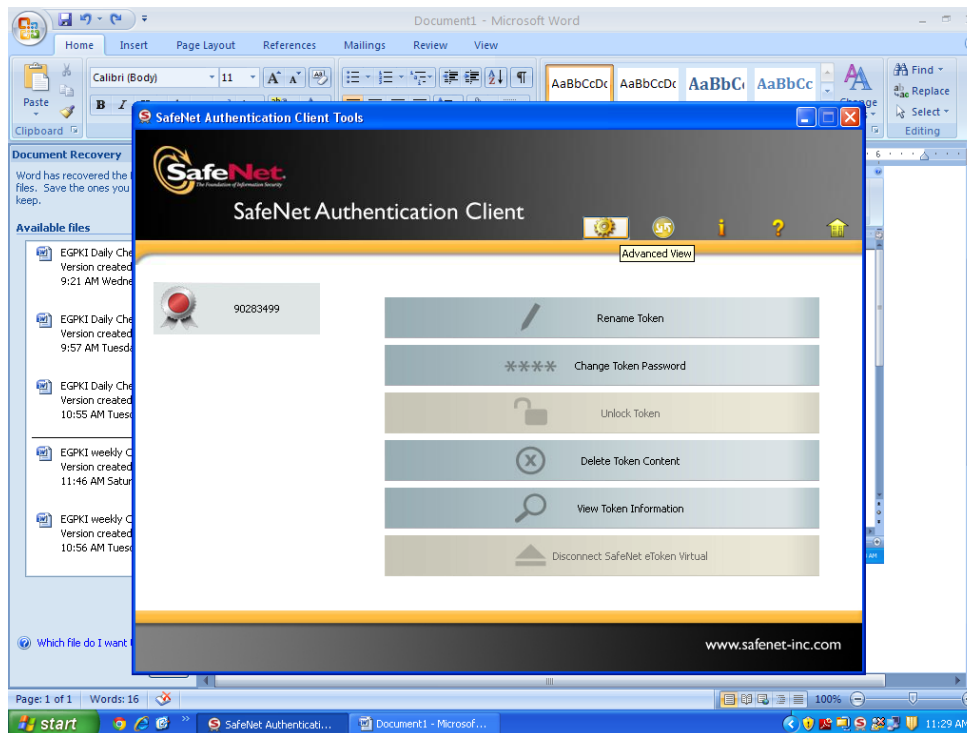


## TOKEN INITIALIZATION

Go to All Programs > SafeNet > SafeNet Authentication Client > SafeNet Authentication Client Tools

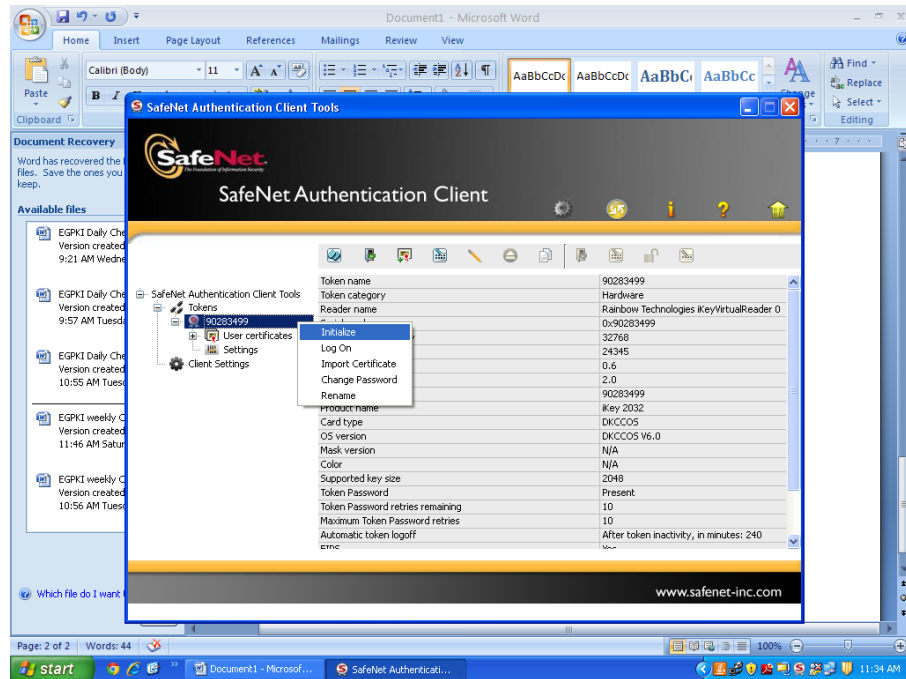
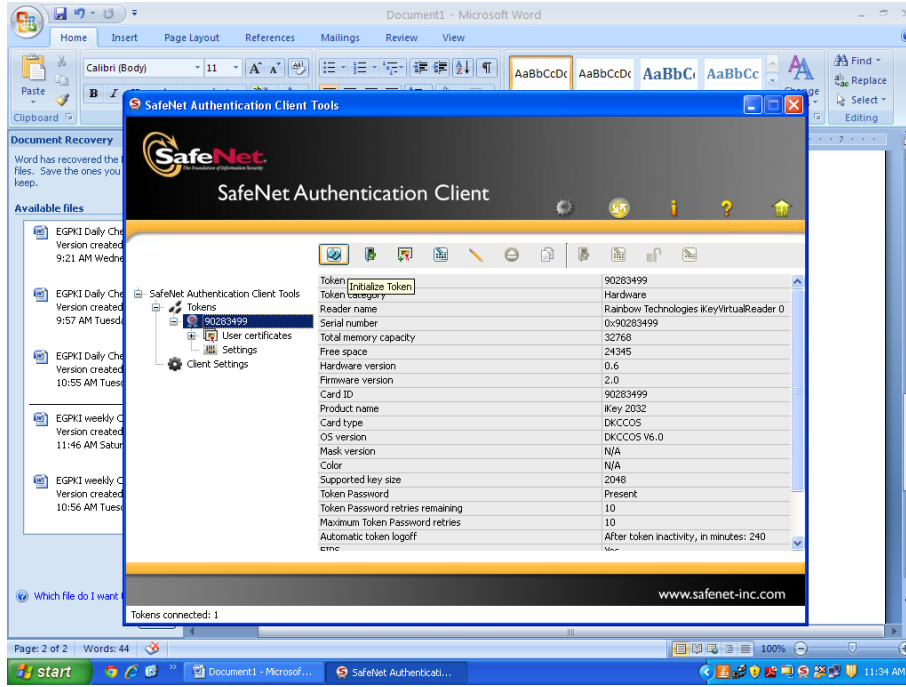


Click on Advanced view button

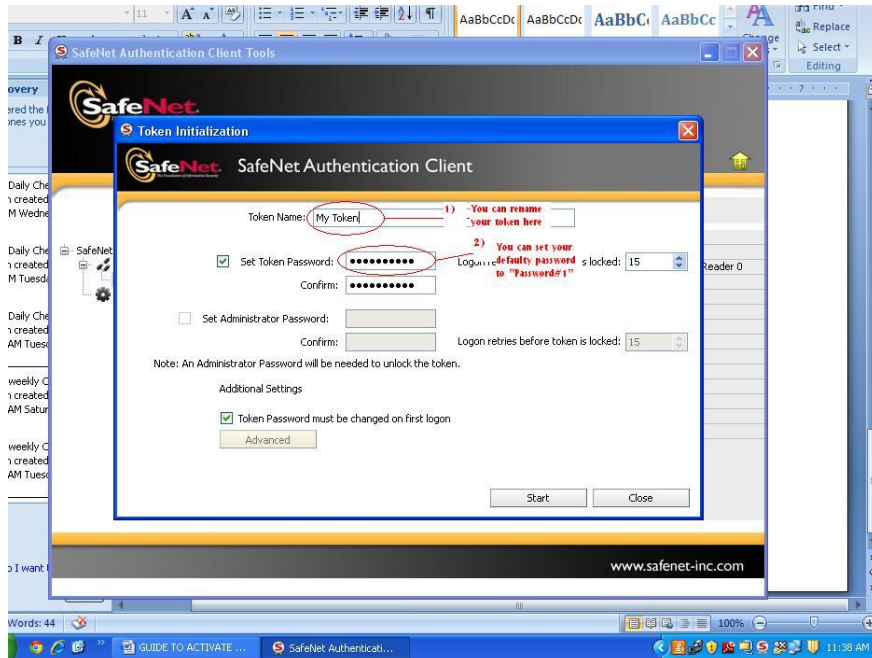


Click on Token Serial number > To initialize:

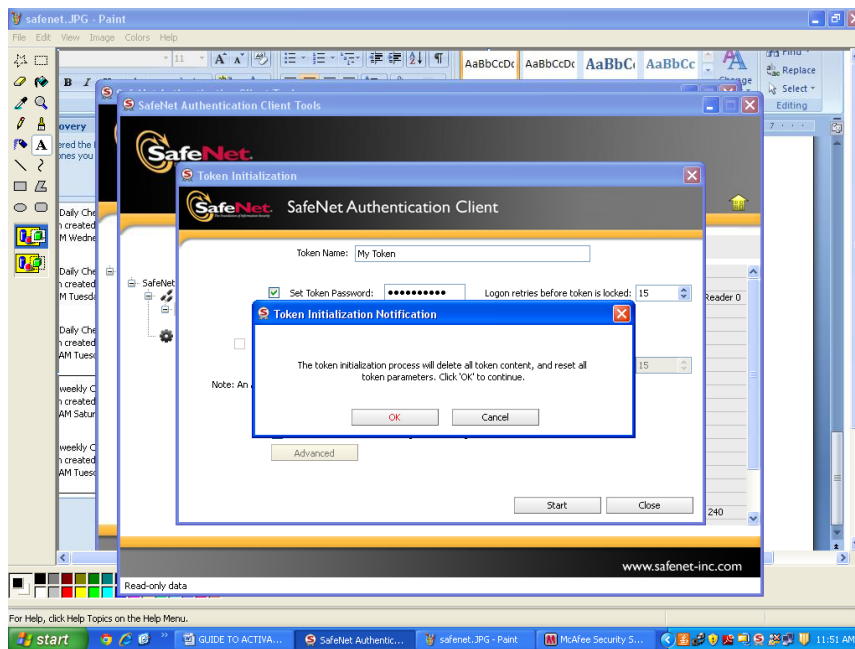
- Click on Initialize button or
- Right click Token serial number > Initialize Token



## Renaming Your Token & Set Default Token Password

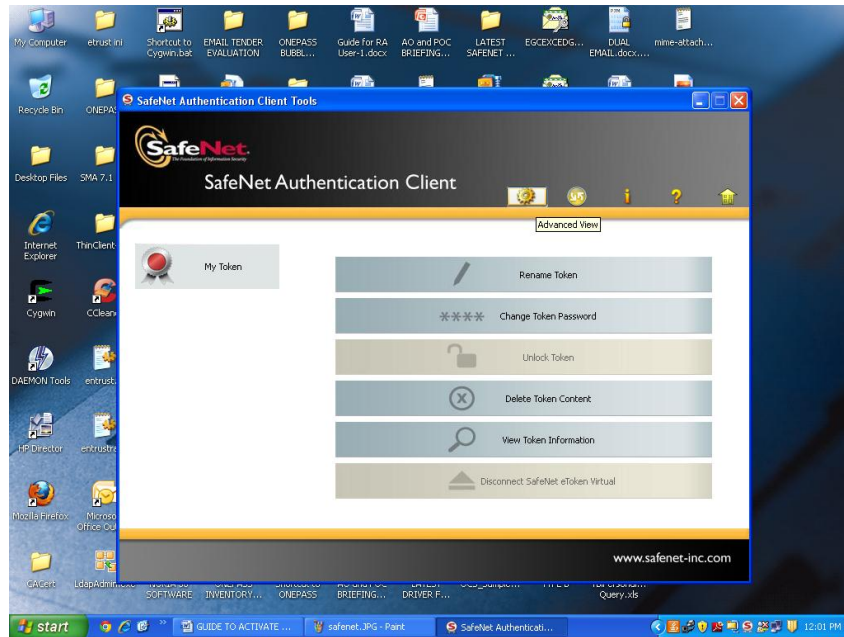


Click on Start button to start Initializing the token > Click Ok

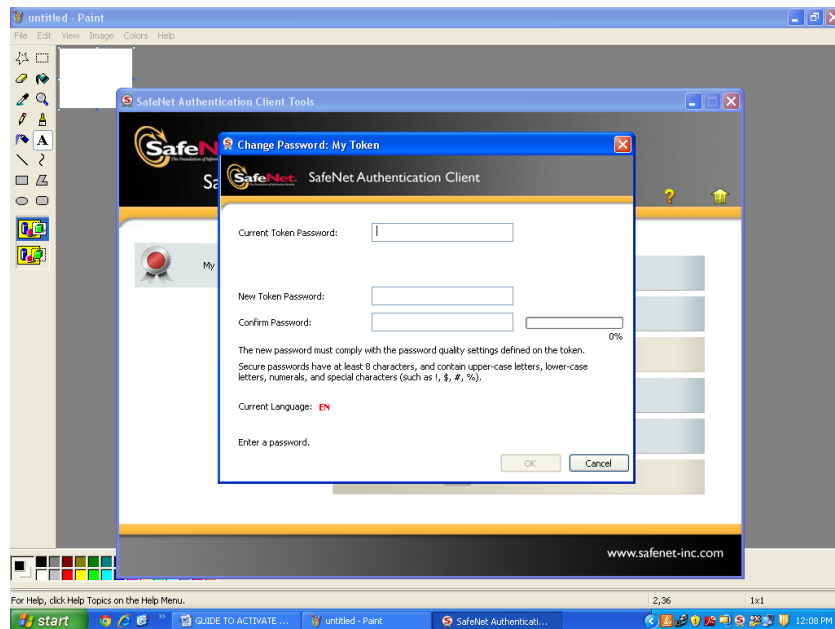


## CHANGING TOKEN PASSWORD

Click on Advanced View > Click on Change Token Password



Make sure the new token password comply with the password security setting defined. (100%)



## TOKEN ACTIVATION

### Enrollment for Digital ID

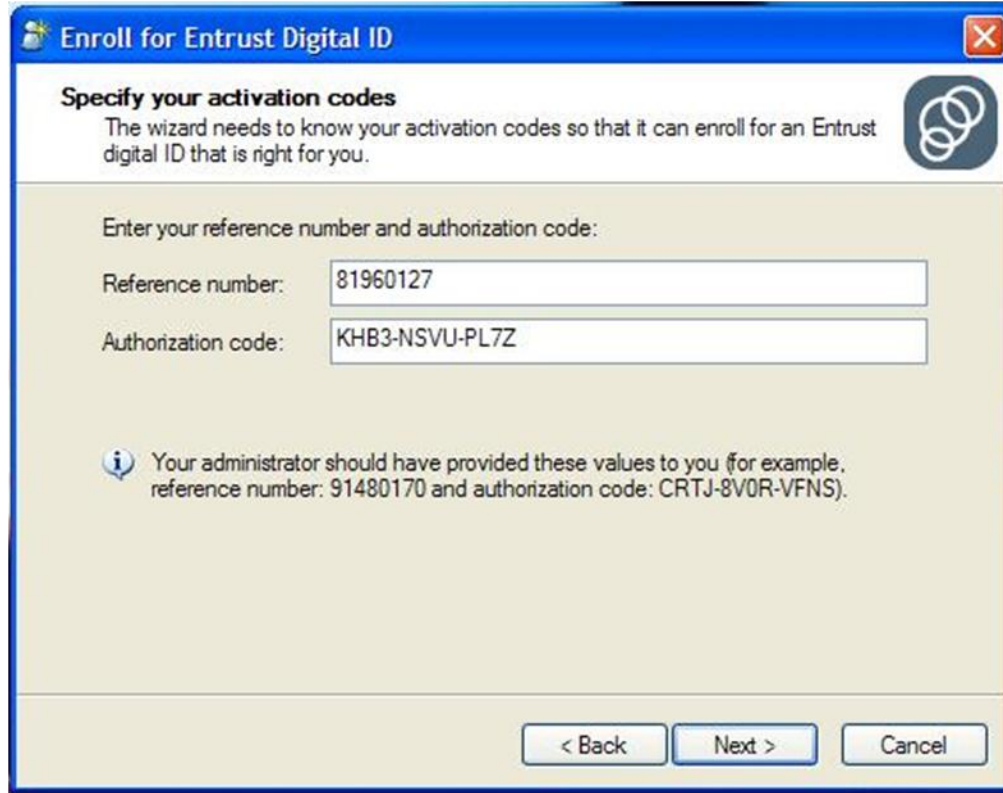
- a. Plug in token
- b. Right click on the EESP icon at the taskbar
- c. Select <Enroll for Entrust Digital ID>



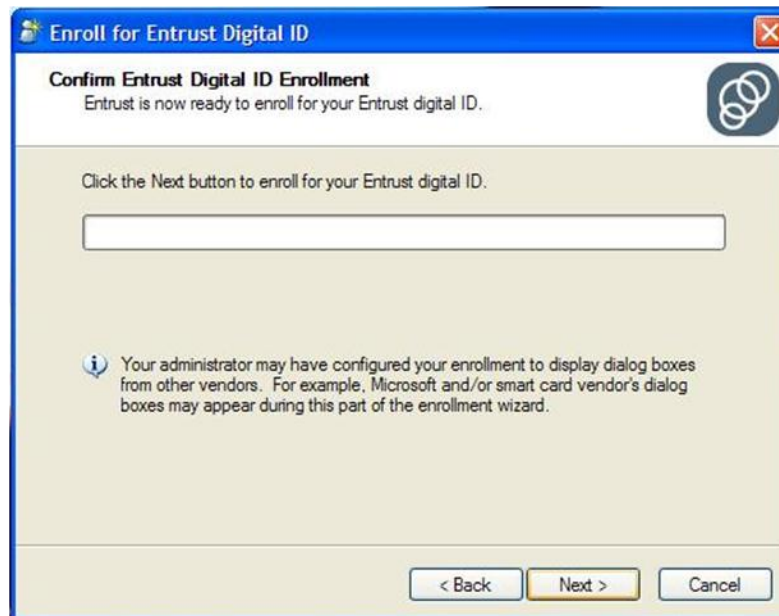
- d. Click <Next>



- e. Enter the Reference Number and Authorization Code
- f. Click <Next>



- g. Click <Next>



- h. Key in token password when prompted and click <OK>
- i. This process will take a while, please do not cancel it
- j. Click Finish to complete the process



Your Certificate is ready to be used!